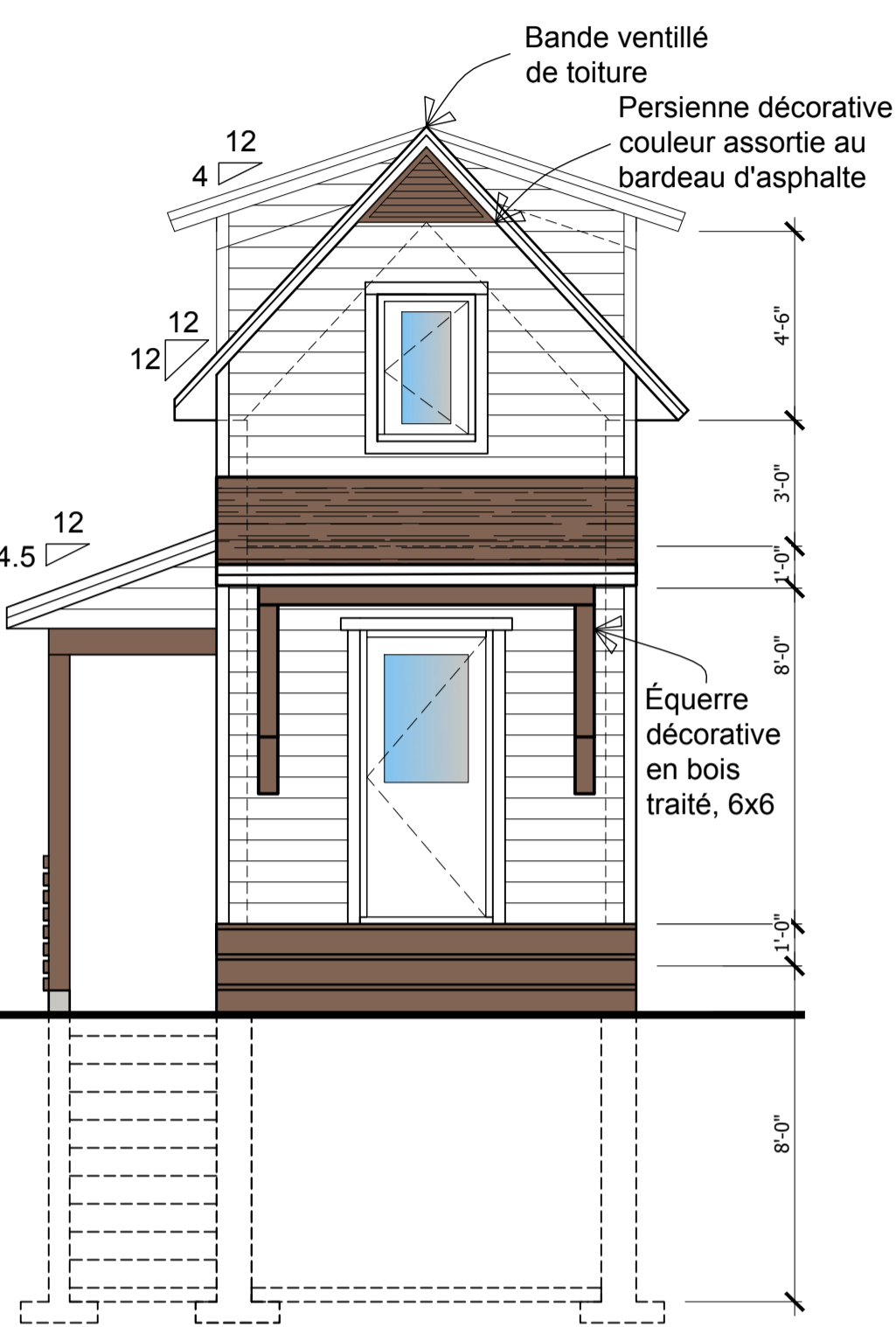


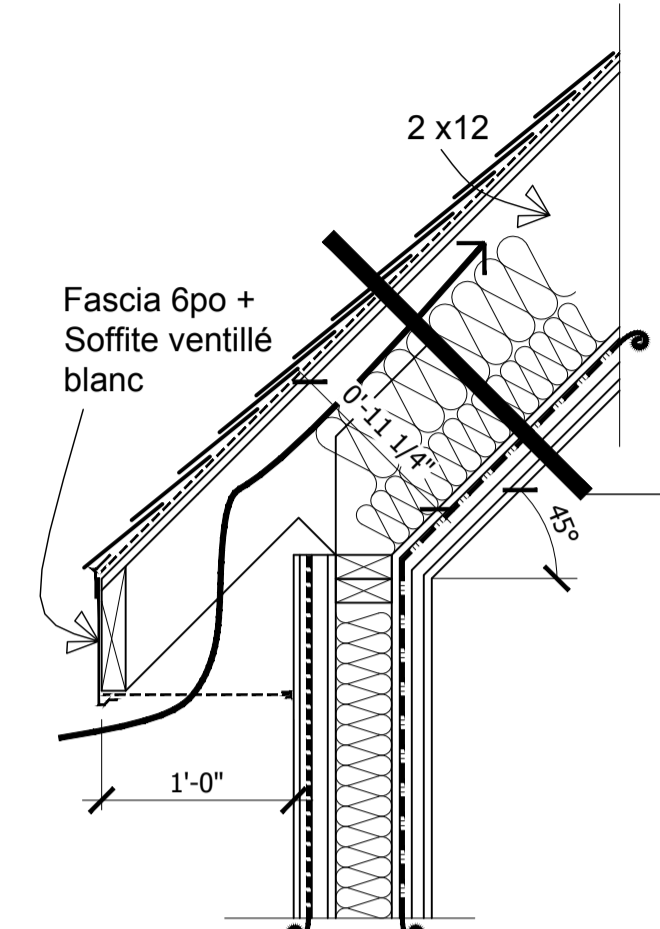
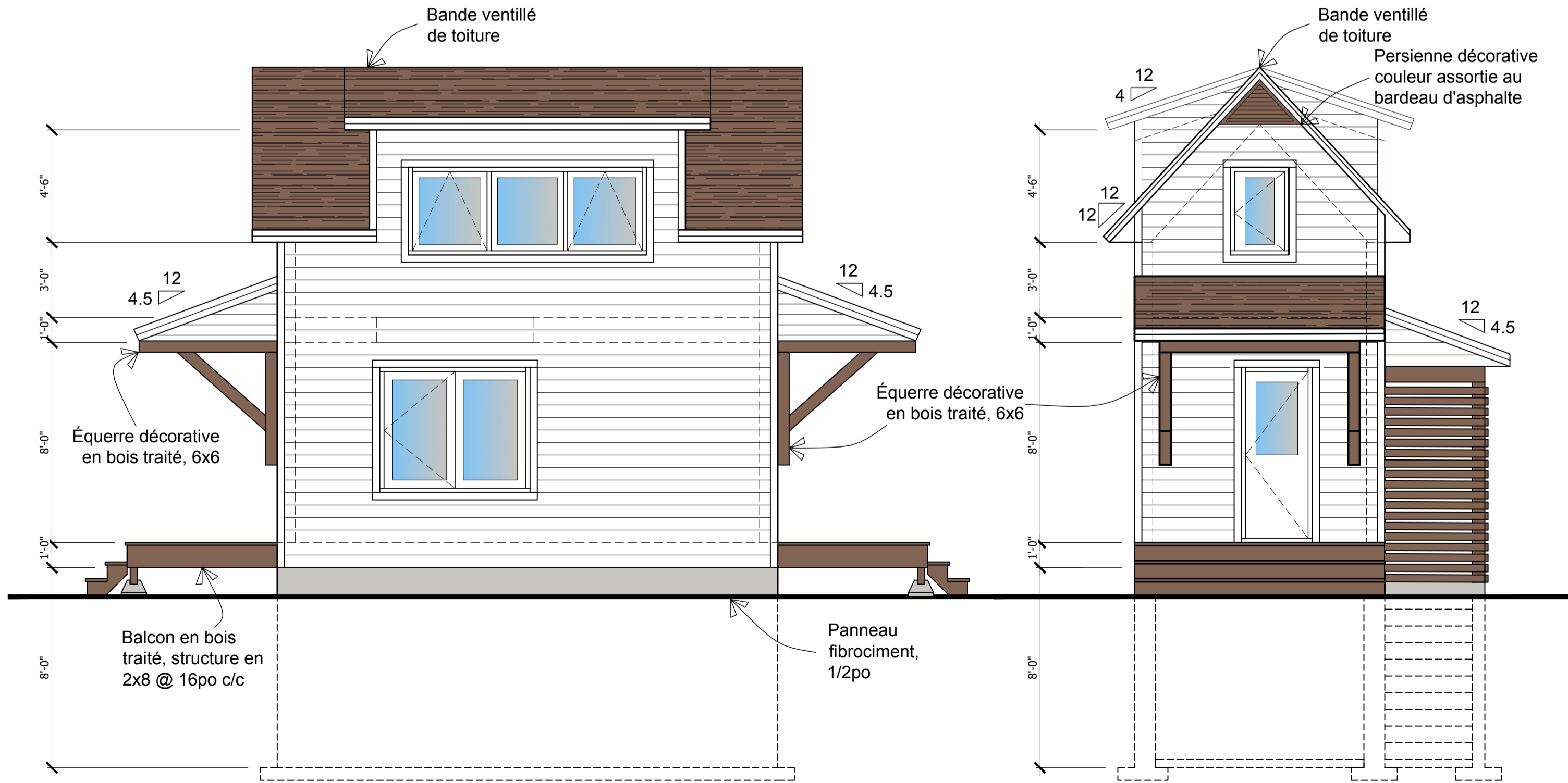
Élévation gauche

Échelle $\frac{1}{4}$ " = 1'-0"

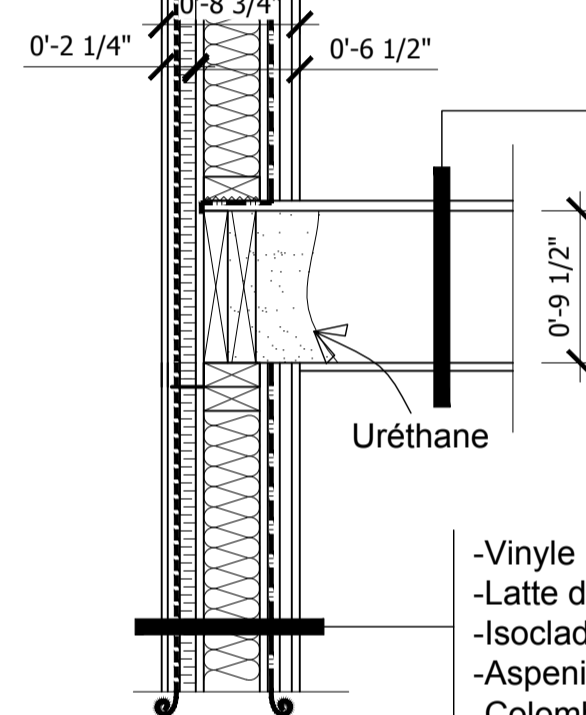


Élévation avant

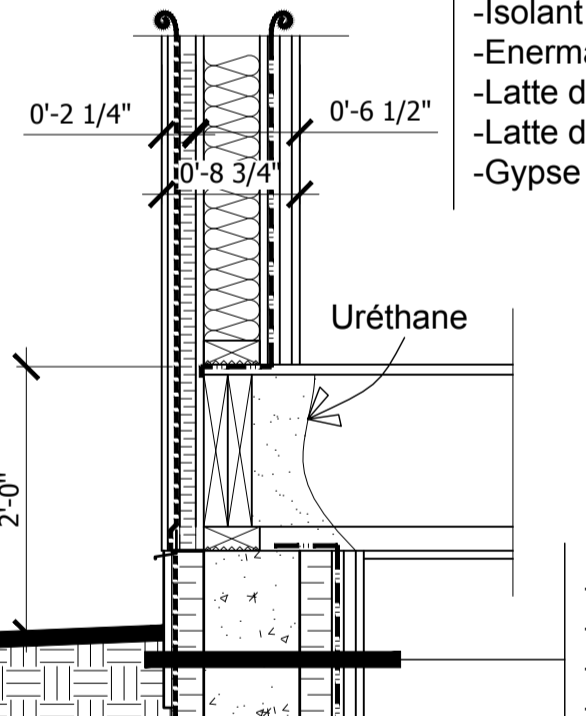
Échelle $\frac{1}{4}$ " = 1'-0"



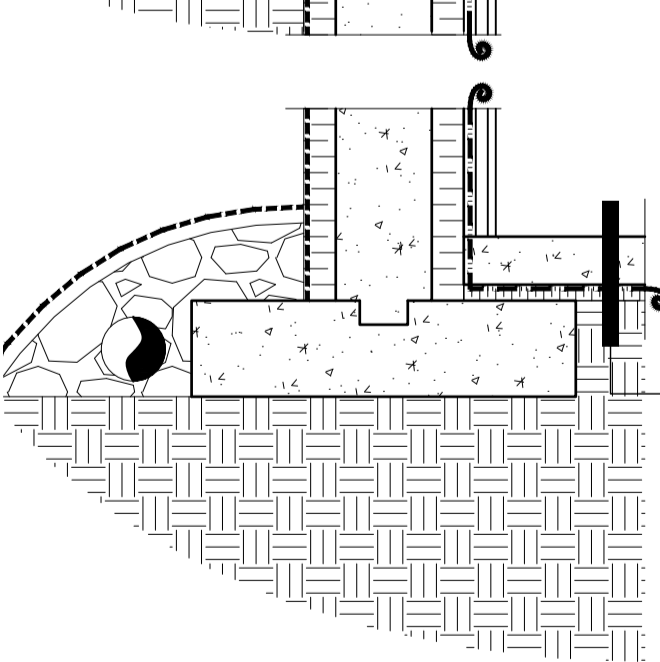
- Bardeau d'asphalte, modèle Dakota, couleur Ambré
- Membrane d'avant-toit
- Contreplaqué, 1/2po
- Solve de toiture, 2x12 @ 16po.
- Isolant en natte, 3.5po
- Isolant en natte, 5-1/2po
- Enermax, 1/2po
- Latte de bois, 1x3, horizontale
- Latte de bois, 1x3, verticale
- Gypse 1/2po



- Finition de plancher
- Contreplaqué, 3/4po
- Solve de plancher, 2x10 @ 16po c/c
- Gypse, 1/2po



- Vinyle D4 Blanc.
- Latte de bois, 1x3, verticale @ 16po c/c.
- Isoclad, 1po.
- Aspenite, 7/16po.
- Colombage de bois, 2x4 @ 16po c/c.
- Isolant en natte, 3.5po.
- Enermax, 1/2 po.
- Latte de bois, 1x3, horizontale
- Latte de bois, 1x3, verticale
- Gypse 1/2po

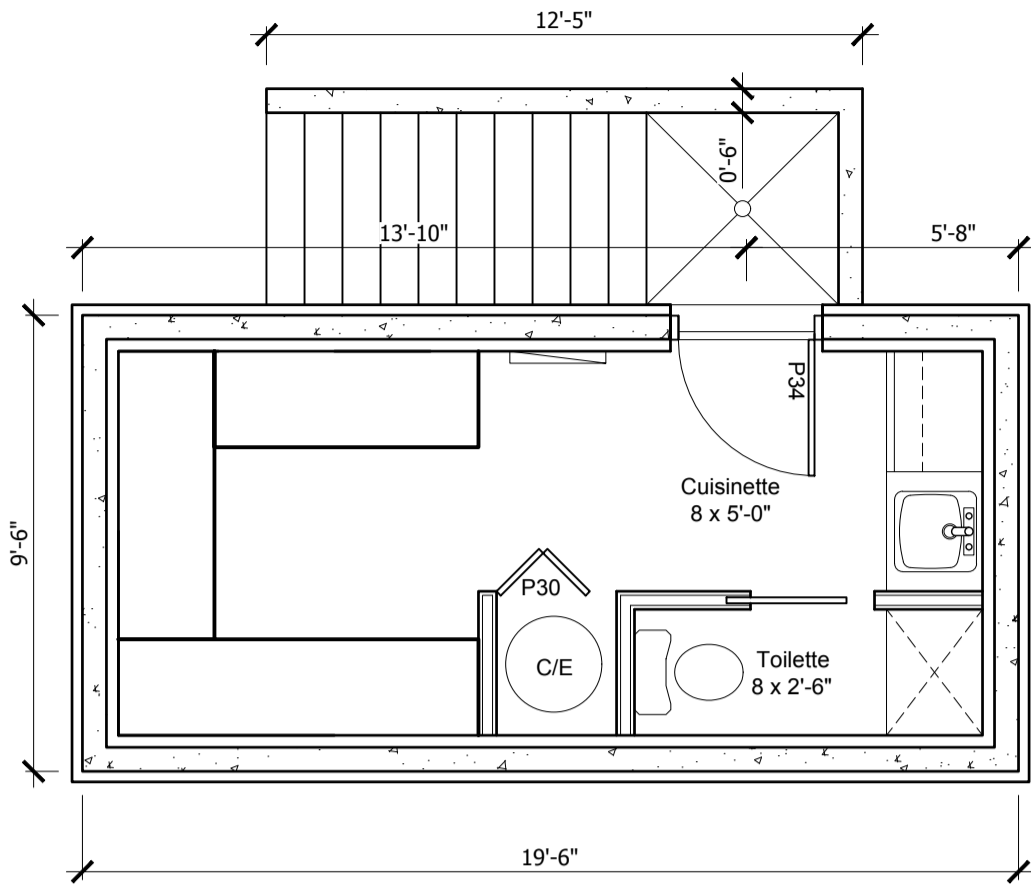


- Membrane de fondation
- Coffrage isolant, 2po
- Béton, 6po
- Coffrage isolant, 2po
- Polythène pare-vapeur
- Latte de bois, 1x3 horizontale
- Latte de bois, 1x3, verticale
- Gypse, 1/2po

- Dalle de béton, 3po
- Polythène pare-vapeur
- Isolant, 1po

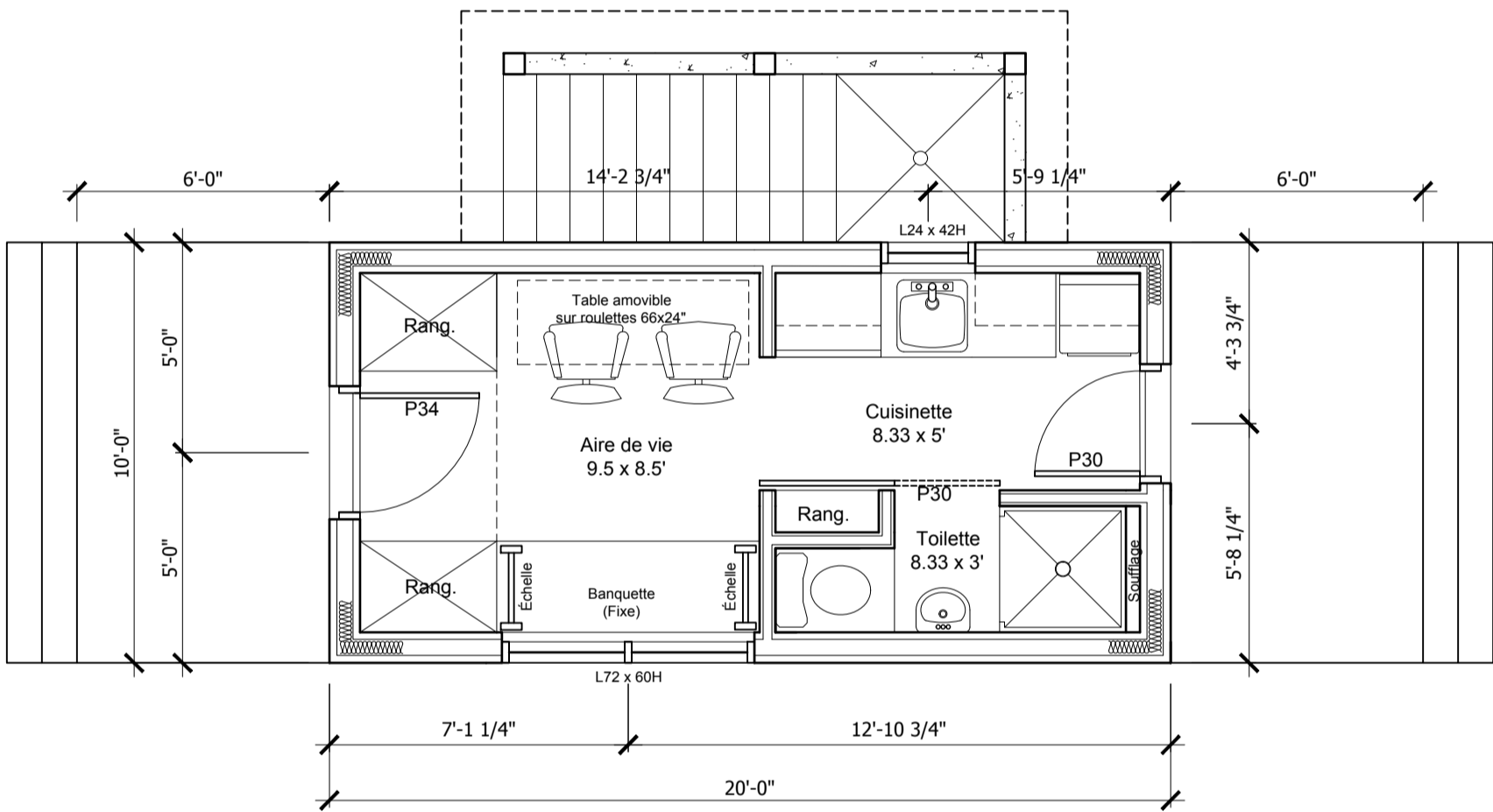
Coupe de mur type

Échelle 1" = 1'-0"



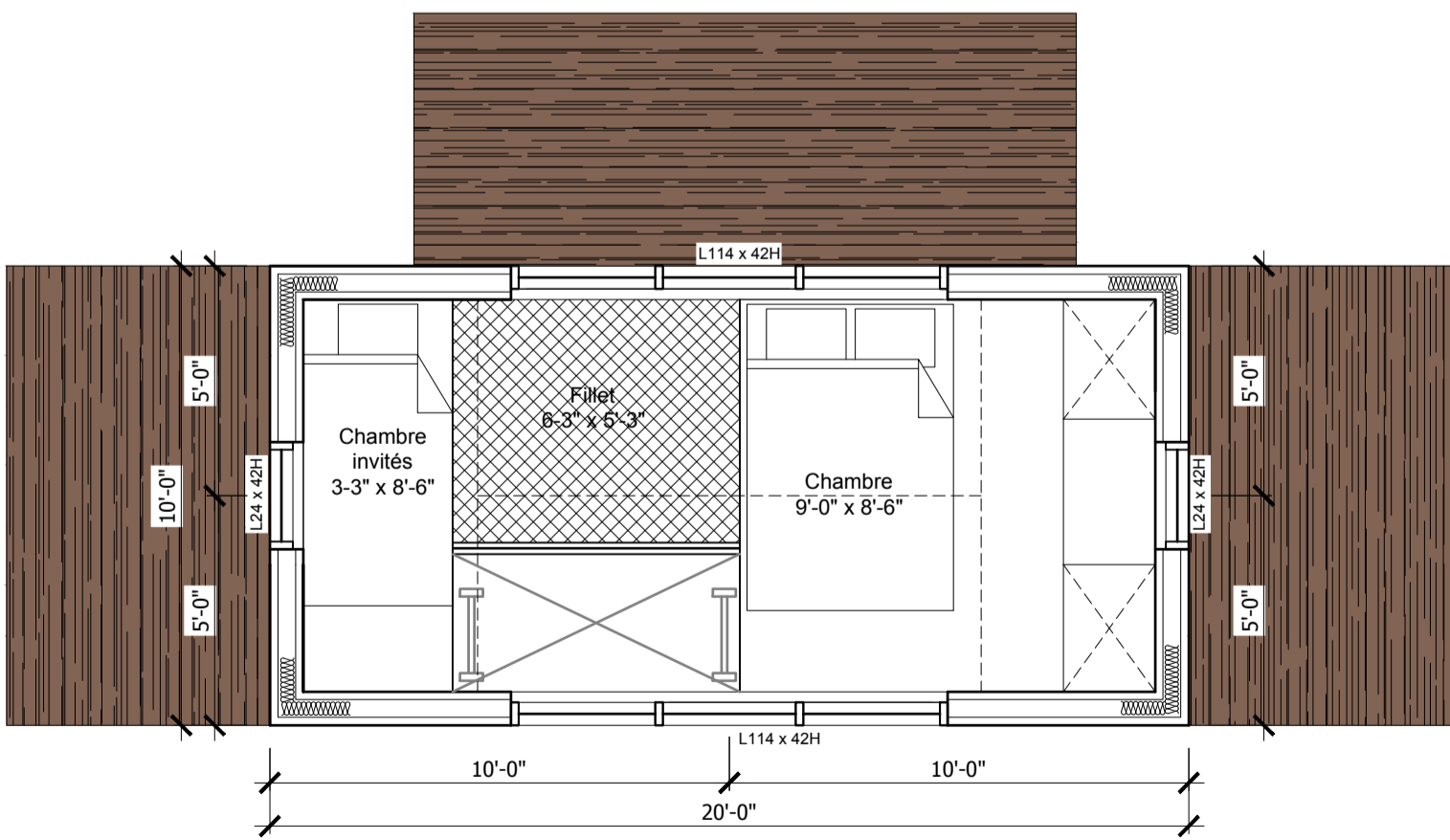
Plan du sous-sol

Échelle $\frac{1}{4}$ " = 1'-0"



Plan du rez-de-chaussée

Échelle $\frac{1}{4}$ " = 1'-0"



Plan mezzanine

Échelle $\frac{1}{4}$ " = 1'-0"